

LAURENT
RESIDENTIAL



BOATRACE COURT, MORTLAKE HIGH STREET
LONDON, SW14 8HL

£825,000
LEASEHOLD

BOATRACE COURT

- Riverside apartment • Two double bedrooms • Two bathrooms • Spacious Kitchen • Reception room with balcony • Gated and covered parking • Storage area • Close to transport • Split level • No onward chain



A generously proportioned, split-level, top-floor riverside maisonette on Mortlake High Street, offering two double bedrooms, two bathrooms, a large reception room, a separate kitchen and a welcoming entrance hall, extending to 1,241sqft.

Bright and airy throughout, the property benefits from a dual aspect across both floors and a private balcony with attractive river views. Excellent room sizes and a flexible layout provide ideal space for entertaining and home working, making it well suited to downsizers, first-time buyers and investors alike.

Perfectly positioned moments from the Thames Path, the apartment is within easy reach of Mortlake and Barnes Bridge stations, providing direct access into Waterloo. A wide range of local amenities are nearby, including Sainsbury's, The White Hart, Rick Stein, Orange Pekoe, Waitrose and Gail's, while green open spaces such as Richmond Park, Wimbledon Common and Barnes Green are also close at hand.

Additional benefits include a secure, covered allocated parking space, a landscaped communal courtyard garden and a video entry system.

A rare chance to acquire an exceptionally spacious two-bedroom home in this sought-after SW14 riverside location with no onward chain.

Check your broadband and mobile coverage here <https://www.ofcom.org.uk/phones-and-broadband/coverage-and-speeds/ofcom-checker/>

Check your flood risk here <https://www.gov.uk/check-long-term-flood-risk>

Lease: 100 years

Service Charge: £4339pa

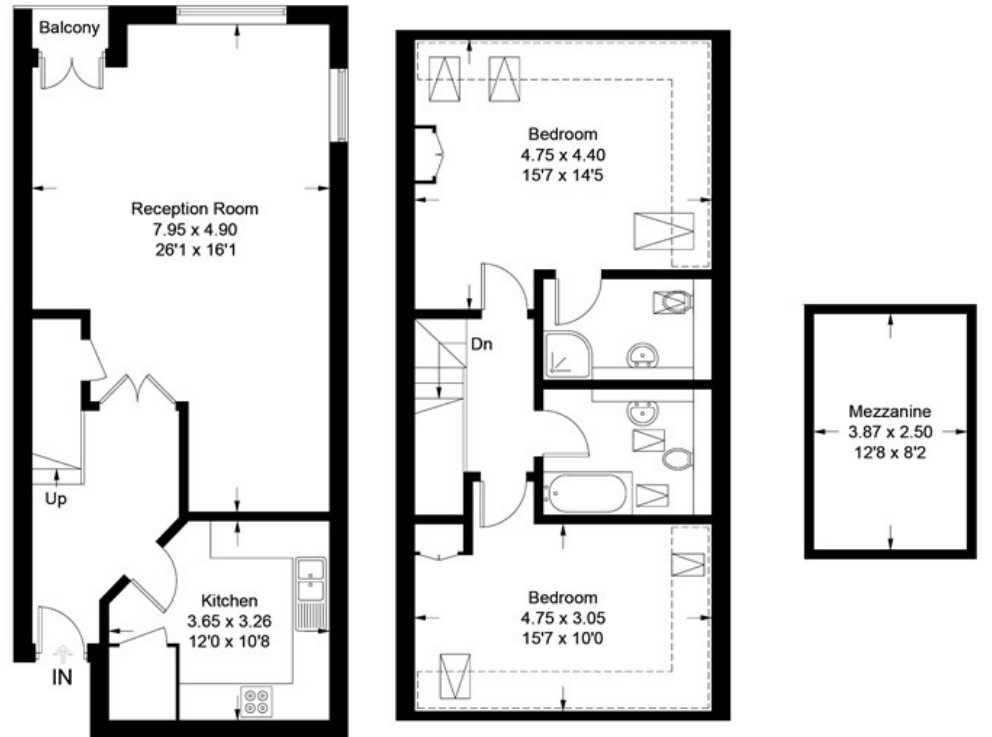
Ground rent £125pa

Council: Richmond

Council tax band: F

Boatrace Court, London, SW14

Approximate Gross Internal Area = 105.8 sq m / 1138 sq ft
 Mezzanine = 9.6 sq m / 103 sq ft
 Total = 115.4 sq m / 1241 sq ft



Second Floor
 52.7 sq m / 567 sq ft

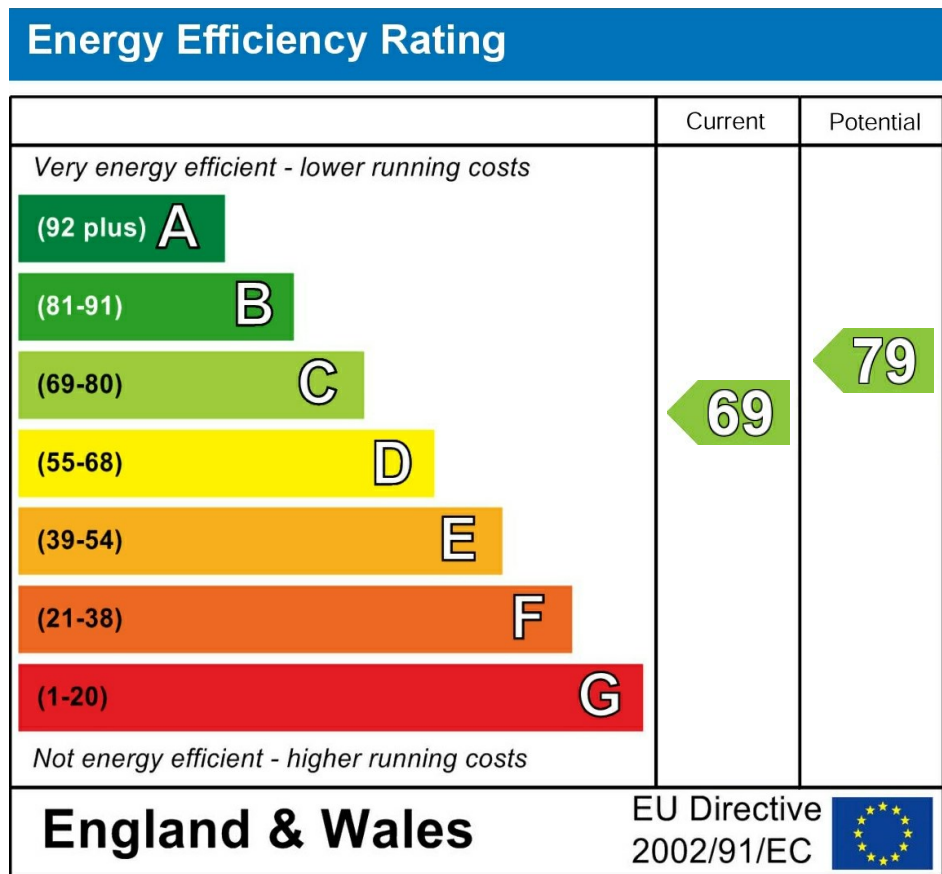
Third Floor
 53.1 sq m / 571 sq ft

Mezzanine
 9.6 sq m / 103 sq ft

= Reduced headroom below 1.5m / 5'0

BOATRACE COURT





LAURENT
RESIDENTIAL

Barnes Lettings
Essex Lodge
1A Barnes High Street
Barnes
London
SW13 9LB

0208 876 4466
property@laurentresidential.co.uk
www.laurentresidential.co.uk

Agents Note: Whilst every care has been taken to prepare these particulars, they are for guidance purposes only. All measurements are approximate and are for general guidance purposes only and whilst every care has been taken to ensure their accuracy, they should not be relied upon and potential buyers/tenants are advised to recheck the measurements